

# SCARLETT

Design G. Carollo

PANCA | BENCH

2008



# SCARLETT

Design G. Carollo

PANCA | BENCH

2008

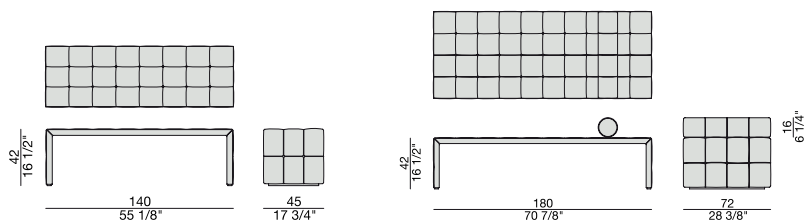
Panca interamente rivestita nei tessuti della collezione.

*Upholstered bench covered by the fabrics of the collection.*

*Sitzbank gepolstert in den Stoffen der Kollektion.*

*Banquette entièrement revêtue dans les tissus de la collection.*

*Banqueta enteramente revestida en las telas de la colección.*



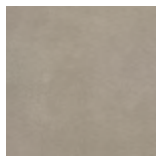
**Metallo** | *Metal*



Cromato  
*Chrome Plated*

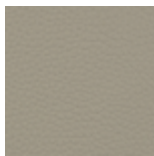
## Pelle | Leather

Cat. LUX



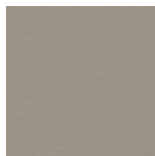
Nabuk

Cat. PLUS



Pelle PLUS

Cat. EXTRA



Pelle EXTRA

Cat. PELLE



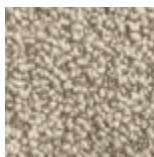
Pelle

## Rivestimento | Cover

Cat. A



Twist

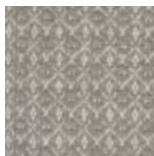


Zante

Cat. B



Bouclage



Motley



Tammy



Rabat

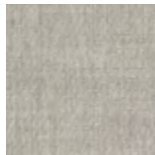
Cat. C



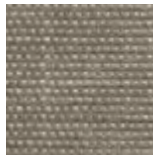
Armam



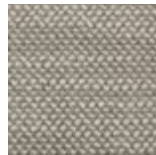
Ikat



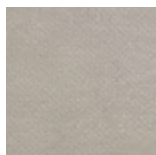
Lint



Loom



Madras



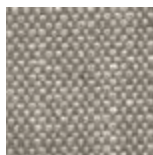
Moleskin



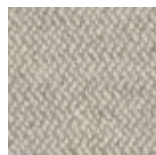
Moran



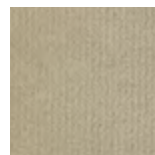
Patch



Silesia

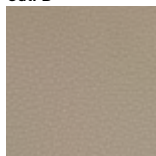


Serge



Velvet

Cat. D



Paros  
eco leather

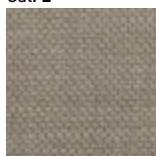


Range

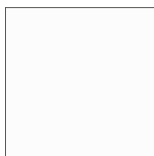


Tress

Cat. E



Dorian



In Bianco/Calico

Cat. COM

Disponibile con tessuto fornito dal cliente.  
Available with fabric supplied by the customer.  
Verfügbar mit Kundenstoff.  
Disponibile avec tissu du client.  
Disponibile con tela suministrada por el cliente.