

FRIDA

Design N. Devetag

SEDIA | CHAIR

2023



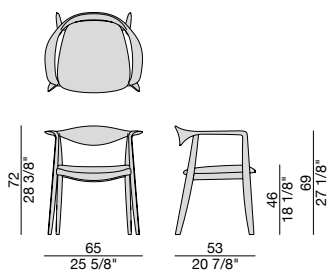
Sedia con braccioli con struttura in massello di noce canaletta e rivestimento nei tessuti della collezione.

Chair with arms with frame in solid canaletta walnut and cover in the fabrics of the collection.

Stuhl mit Armlehne mit Gestell aus massivem Nussbaum-Canaletta und Bezug aus dem Stoff der Kollektion.

Chaise avec accoudoirs en noyer canaletta massif et revêtement dans les tissus de la collection.

Silla con brazos con estructura de nogal canaletta macizo y revestimiento en las telas de la colección.



FRIDA

Design N. Devetag

SEDIA | CHAIR

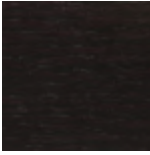
2023



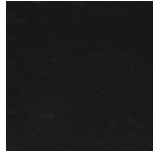
Essenze | Wood



Noce canaletta
Canaletta walnut



Noce canaletta
tinto moka
*Canaletta walnut
moka stained*



Noce canaletta
tinto wengé
*Canaletta walnut
wengé stained*

Pelle | Leather

Cat. LUX



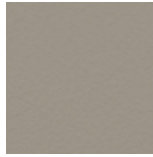
Nabuk

Cat. PLUS



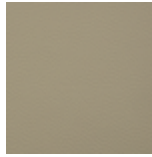
Pelle PLUS

Cat. EXTRA



Pelle EXTRA

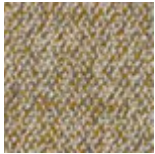
Cat. PELLE



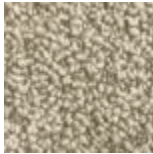
Pelle

Rivestimento | Cover

Cat. A



Twist

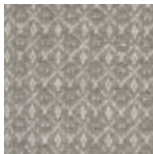


Zante

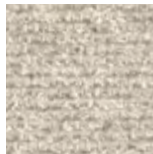
Cat. B



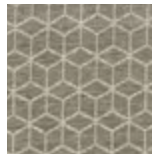
Bouclage



Motley



Tammy



Rabat

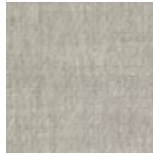
Cat. C



Armam



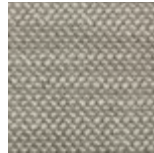
Ikat



Lint



Loom



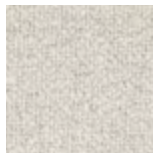
Madras



Moleskin



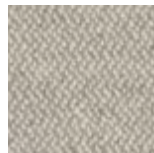
Moran



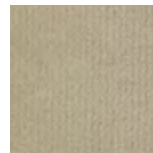
Patch



Silesia

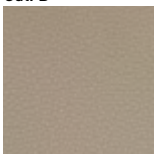


Serge



Velvet

Cat. D



Paros
eco leather

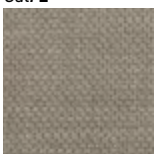


Range

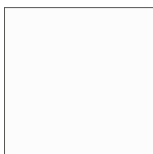


Tress

Cat. E



Dorian



In Bianco/Calico

Cat. COM

Disponibile con tessuto fornito dal cliente.

Available with fabric supplied by the customer.

Verfügbar mit Kundenstoff.

Disponibile avec tissu du client.

Disponibile con tela suministrada por el cliente.