



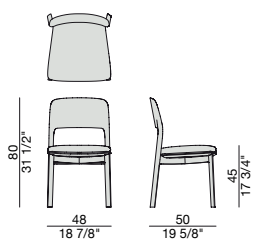
Sedia con struttura in massello di noce canaletta. Sedile in massello di noce canaletta con imbottitura in gomma a densità differenziata con supporto interno in multistrato e rivestimento nei tessuti della collezione. Terminale piedino in nylon.

Chair with frame in solid canaletta walnut. Seat in solid canaletta walnut with different density foam padding with internal support in plywood and cover in the fabrics of the collection. Nylon end-feet.

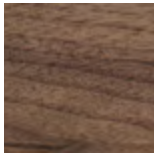
Armlehnstuhl aus massivem Nussbaumcanaletta. Sitzfläche in massivem Nussbaumcanaletta. Sitzkissen mit Sperrholzeinlage zur Stabilisierung und Schaumstoffpolsterung in unterschiedlichen Dichten, bezogen mit den Stoffen aus der Kollektion. Fußgleiter aus Nylon.

Chaise et structure en noyer canaletta massif. Assise en noyer canaletta massif avec rembourrage en gomme à densité diversifiée avec support interne en bois contreplaqué et revêtement dans les tissus de la collection.

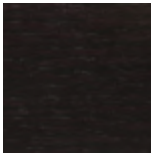
Silla con estructura de nogal canaletta macizo. Asiento de nogal canaletta macizo con relleno en goma de densidad diferenciada con soporte interno de contrachapado revestido en las telas de la colección. Con pies de nylon.



Essenze | Wood



Noce canaletta
Canaletta walnut



Noce canaletta
tinto moka
*Canaletta walnut
moka stained*



Noce canaletta
tinto wengè
*Canaletta walnut
wengè stained*

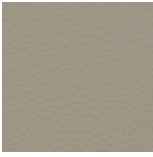
Pelle | Leather

Cat. LUX



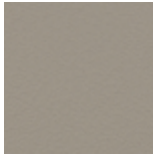
Nabuk

Cat. PLUS



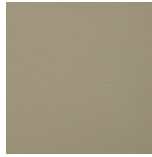
Pelle PLUS

Cat. EXTRA



Pelle EXTRA

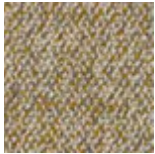
Cat. PELLE



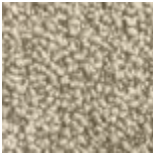
Pelle

Rivestimento | Cover

Cat. A



Twist



Zante

Cat. B



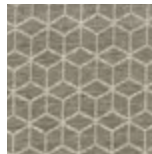
Bouclage



Motley



Tammy



Rabat

Cat. C



Armam



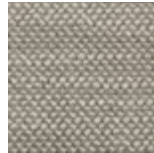
Ikat



Lint



Loom



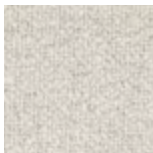
Madras



Moleskin



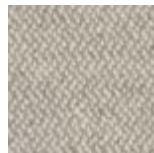
Moran



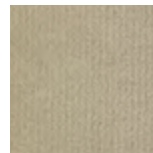
Patch



Silesia



Serge



Velvet

Cat. D



Paros
eco leather

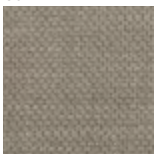


Range

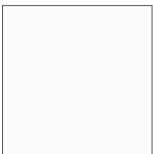


Tress

Cat. E



Dorian



In Bianco/Calico

Cat. COM

Disponibile con tessuto fornito dal cliente.

Available with fabric supplied by the customer.

Verfügbar mit Kundenstoff.

Disponibile avec tissu du client.

Disponibile con tela suministrada por el cliente.