



KEPLER

Design G. Azzarello

SCRITTOIO | WRITING DESK

2010

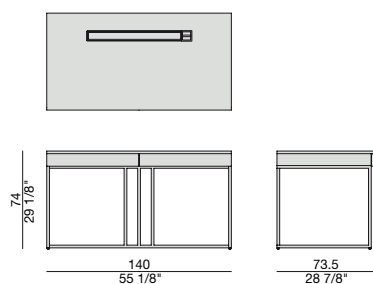
Scrittoio in noce canaletta con due cassetti, vano portaoggetti, foro passacavi e base in metallo.

Writing-desk in canaletta walnut with two drawers, a storage for small objects, a hole for cables management and metal base.

Schreibtisch aus Nussbaum Canaletta mit zwei Schubladen, Ablage mit Kabeldurchführung und Metallgestell.

Bureau en noyer canaletta avec deux tiroirs, vide-poches, avec trou pour les câbles et piètement en métal.

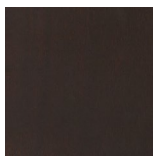
Escritorio en nogal canaletta con dos cajones, hueco portaobjetos, agujero pasacables y base en metal.



Essenze | Wood



NOCE CANALETTA
Canaletta Walnut

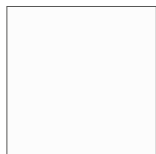


NOCE CANALETTA
Canaletta Walnut
tinto/stained moka



NOCE CANALETTA
Canaletta Walnut
tinto/stained wengé

Laccato opaco poro chiuso | Matt Lacquered closed pore



BIANCO
White
(RAL 9016)



AVORIO
Ivory
(RAL 1013)



ARGILLA
Argilla
(RAL 7006)



PIOMBO
Piombo
(NCS S5005G20Y)



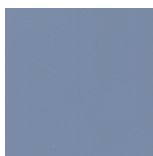
NERO
Black
(RAL 9005)



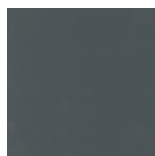
GRANATA
Granata
(NCS S4050Y90R)



PISTACCHIO
Pistacchio
(PANTONE 5825)



AVIO
Avio
(PANTONE 5415)

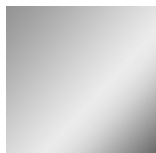


IRON
Iron
(RAL 7011)



CIOCCOLATO
Chocolate
(RAL 8019)

Metallo | Metal



CROMO SATINATO
Satin chromed