

# BELT

POLTRONA | ARMCHAIR

Design M. Marconato & T. Zappa

2013



# BELT

Design M. Marconato & T. Zappa

POLTRONA | ARMCHAIR

2013

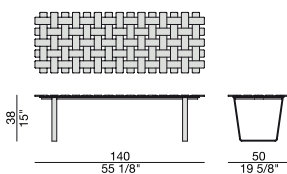
Panca rettangolare in massello di noce canaletta e base in metallo.

*Rectangular bench in solid canaletta walnut and metal base.*

*Rechteckiger Sitzbank aus massivem Nussbaum Canaletta und Metallgestell.*

*Banquette rectangulaire en noyer canaletta massif et embase en metal.*

*Banco rectangular en nogal canaletta macizo y estructura en metal.*



**Essenze** | *Wood*



NOCE CANALETTA  
Canaletta Walnut

**Metallo** | *Metal*



GRIGIO PELTRO  
Grey Pewter

# BELT

Design M. Marconato & T. Zappa

POLTRONA | ARMCHAIR

2013

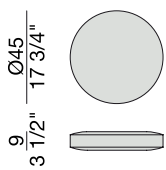
Cuscino rotondo per panca  
nei tessuti della collezione.

Round seat cushion for bench  
in the fabrics of the collection.

Runder Sitz-Kissen fuer Bank  
in den Stoffen der Kollektion.

Coussin rond pour banquette  
dans les tissus de la collection.

Cojín redondo para banco en  
las telas de la colección.



## Pelle | Leather

### Cat. LUX



Nabuk

### Cat. PLUS



Pelle PLUS

### Cat. EXTRA



Pelle EXTRA

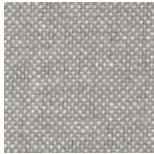
### Cat. PELLE



Pelle

## Rivestimento | Cover

### Cat. A

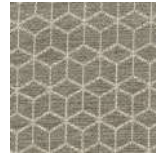


Hallingdal 65



Hound

### Cat. B



Rabat



Milord

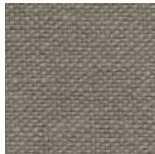
### Cat. C



Armam



Fashion



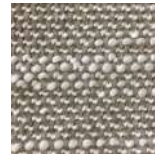
Flax



Ikat



Loom



Madras



Moran



Thalys



Velvet

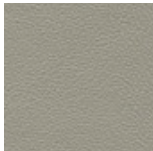


Wool

### Cat. D



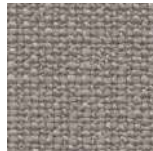
Astra



Ecopelle



Range



Tress

### Cat. E



Cotone



Dorian



In Bianco/Calico

### Cat. COM

Disponibile con tessuto fornito dal cliente.

Available with fabric supplied by the customer.

Verfügbar mit Kundenstoff.

Disponible avec tissu du client.

Disponible con tela suministrada por el cliente.